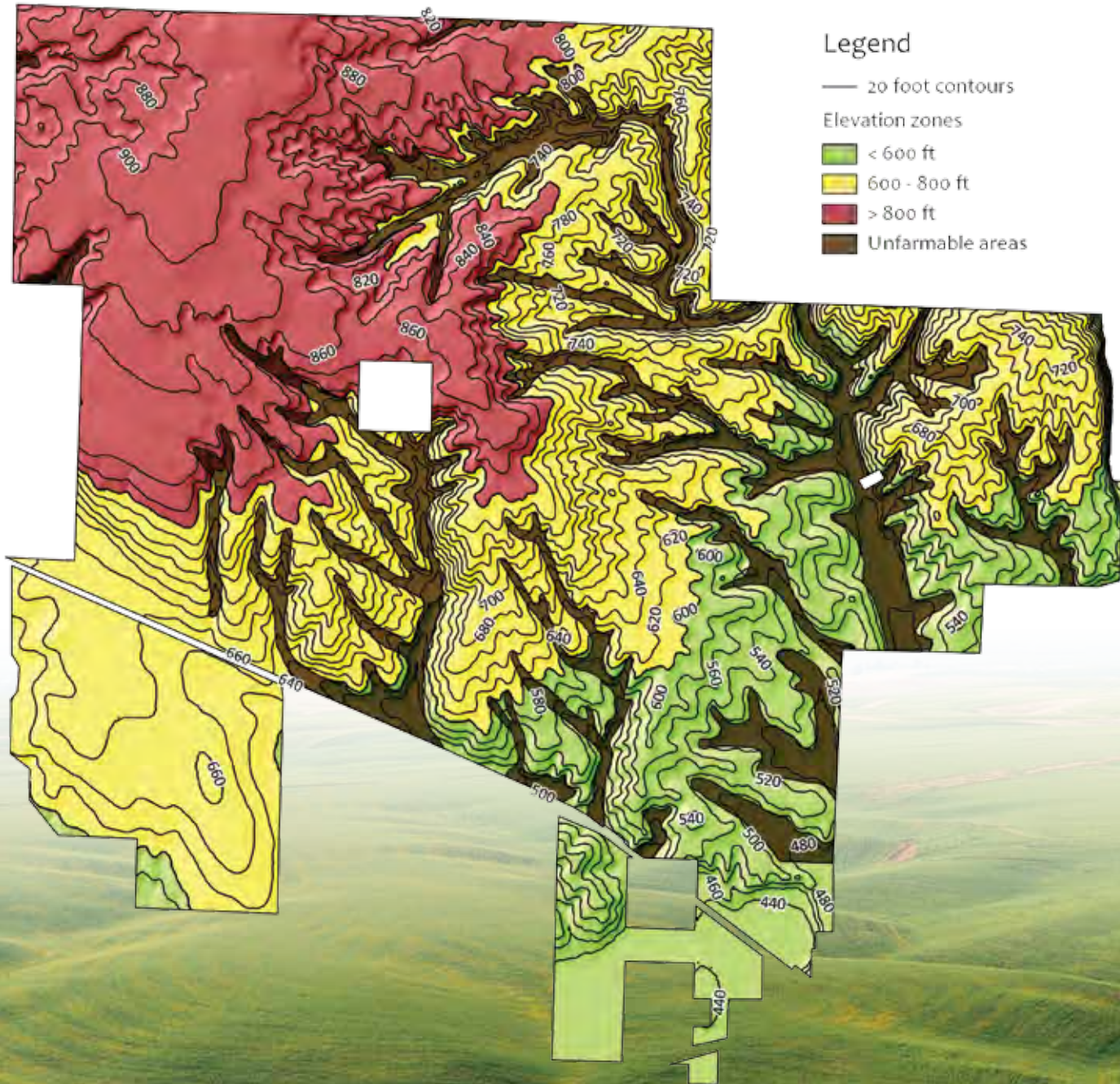


# ELEVATION



The Weidert property's dominating landscape position atop a major convex system of ridges provides excellent sun exposure and protection from the pooling of cold air in winter.

Elevations range from a low of 440 feet in the southeastern corner to a high of over 940 feet in the northwestern portion of the property. Generally, elevations above 600 feet escape the impacts of winter cold, thus it is vital to note that nearly three quarters of the Weidert property lies at elevations above the 600-foot threshold.

Approximately 2,600 acres m/l lie between 600 ft. and 800 ft. in elevation which equates to roughly 45% of the property. In this elevation zone, apples and wine grapes could potentially share the total acreage and thrive by being strategically planted in the parts of the zone best suited for each. In addition, there are approximately 1,600 acres m/l situated above 800 ft. in elevation which equates to roughly 30% of the property. This elevation zone could produce incredibly high quality wine grapes. Finally, the acres that lie below 600 ft. in elevation would be well-suited for blueberry and hop production.

Ideal elevation ranges throughout the property combined with the smooth and gentle topography will create unlimited possibilities for the layout and design of vineyards and orchards, as well as destination wineries with commanding views of the Walla Walla Valley, the Horse Heaven Hills, and the Blue Mountains.

# AIR DRAINAGE

The concave draws and small dry valleys in the landscape allow tremendous air drainage of the pooling cold air in winter and also at times during the growing season. These areas occupy less than 15% of the total acres, and more importantly occupy only about 7% of the high-value acreage above 600 feet, but serve as an incredible benefit for frost protection.

A perspective view of the property looking toward the northwest, highlights the commanding upland position of more than three quarters of the total acreage. In eastern Washington, infrequent and brief but severe episodes of sub-zero Fahrenheit cold temperatures place a premium on just such a ridge top landscape. The topographic patterns and the arrows in this diagram demonstrate just how effectively dense cold air can fall away to lower elevations in almost every direction.

